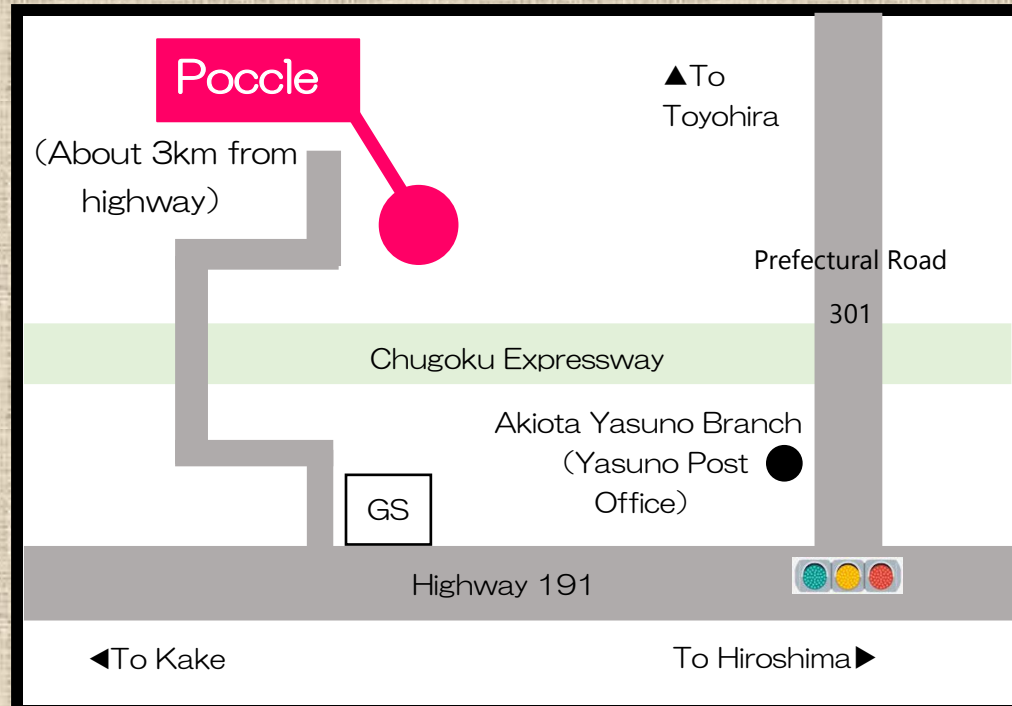


2022

# Akiota Town

# Trash Disposal Guidebook



Contact Us:

Akiota Town Hall

Health Management Office ☎0826-23-1120  
 Residential Division ☎0826-28-2116  
 Kake Branch ☎0826-22-1111  
 Tsutsuga Branch ☎0826-32-2121

<https://www.akiota.jp>



Burnable Trash	1,2P
Recyclable Trash	3,4P
Non-Burnable Trash	5,6P
Plastic Trash	7,8P
Oversized Trash	9P
Electrical Appliances	10P
Carrying In Trash	11P
Non-Collectable Trash	11P
Illegal Dumping	12P
Moving/Office Trash	13P
About SDGs	14P

~Let`s sort our trash correctly and protect our rich, beautiful environment.~

# Burnable Trash



Appropriate Bag (Max Weight 10 kg per bag)  
It is possible to use Akiota's previous paper bags.  
Collected Twice A Week

## Kitchen Waste



Raw trash, egg shells, seashells, cooking oil, etc.

## Non-Recyclable Paper



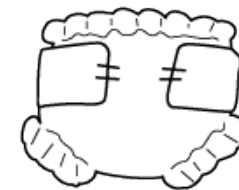
Non-recyclable paper  
(Waterproof paper, paper smaller than a business card, carbon paper, shredder paper, tissue paper, etc.)  
★For paper garbage larger than a business card (ex. Refrigerated packaging, direct mail), please discard in the "Reusable Trash" bag.  
For envelopes, cut off the portion containing private information.

※Direct Mail=広告郵便物

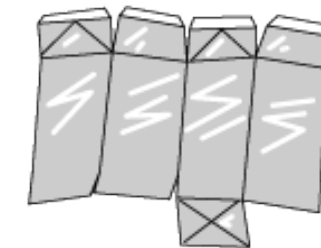
## Other Burnable Trash



Twigs



Diapers



Paper packaging  
(Non-white interior)



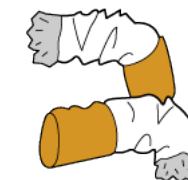
Heat packs, dehumidifying packs



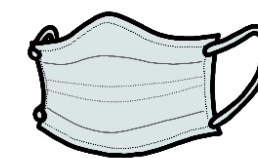
Medicine, pills



Pet litter



Cigarette ends



Disposable masks



Photos

Seasoning containers (made from paper), wood, or bamboo (restricted to items no longer than 30 cm.)

## How to Dispose of Burnable Trash

### Cooking Oil

Wipe off cooking oil with a cloth or newspaper.



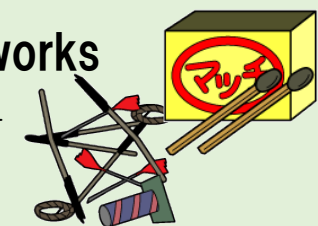
### Diapers

Wipe off human waste before disposal.



### Matches/Fireworks

Put out with water then discard.



### Trimmed Branches

Dispose of sticks no longer than 30 cm in length, and 10 cm in diameter in the appropriate bag.  
※Do not attach the bundled sticks to the appropriate bag.



### Skewers

Break off the tips of pointy objects and carefully discard.



**【Common Items】 Please tie the top of the bag shut.**

- When disposing of trash, tie the tops of each bag so that the contents inside do not fall out.
- Please bring your trash to the pickup site by 8 am on pickup day.
- The bag must not exceed 10 kg.



※Check the town's homepage to confirm where appropriate bags are sold.

# Recyclable Trash



Appropriate Bag (Max Weight 10 kg per bag)

Cans/Bottles: Collected Once A Week  
 Old Clothing, Paper Products:  
 Collected Once A Month

Please dispose of the following items in the "Recyclable Trash" bag.

## Cans



### 【Caution】



Cans with Lids      Cans without Lids      Lids  
**Recyclable**      **Recyclable**      **Non-Burnables**

Beverage cans, canned foods, pet food cans, etc.

## Glass Bottles



Beverage bottles, seasoning, medicine bottles, etc.

## Old Clothing



Old clothes

Curtains      Plush dolls (Non-Washable Items)

Towels, towel buckets, mats (cloth), cushions, pillows, etc.

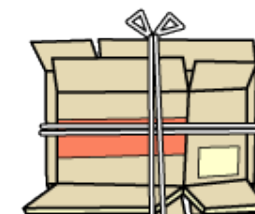
## Paper Products



Newspapers (scraps)



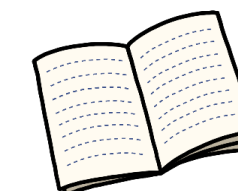
Magazines



Cardboard



Envelopes, letters



Notebooks

※Hand-sorted after pickup.  
 Please do not use adhesive tape to bind together.

(Remove the envelope window)

Scraps, pamphlets, copy paper, patterned paper, stacks, direct mail and items larger than a business card, etc.

## Paper Product Disposal

- Tie together with the bag using a string, or put inside the designated bag.
- Lightly tie together with a string to avoid scattering the paper.
- For soiled paper, discard with **Burnable Trash**.

## Metal Can Disposal

- Do not crush metal cans.
- You do not need to sort aluminum and steel cans.
- Dispose of metal lids in **Non-Burnable trash**, plastic lids in "**Plastic trash**."
- Rinse out and discard the content inside the cans.

## Glass Bottle Disposal

- Do not break the glass bottles. (For broken bottles, discard in **Non-Burnable trash**.)
- For cosmetic and non-food bottles, dispose in **Non-Burnable trash**.
- You do not need to remove labels.
- Rinse out and discard the content inside the glass bottles.

## Old Clothing Disposal

- Discard futons, blankets, mattresses, carpets, and other items that cannot fit inside a bag with **Large/Heavy Trash**.
  - Remove any portions containing business or personal information.
  - Dispose of dirty clothing in **Burnable Trash**.
- Consider donating or reusing clothes that can be worn again.

# Non-Burnable Trash



Appropriate Bag (Max Weight 10 kg per bag),  
Outer bag permitted with designated bag for  
household waste.

Collected Once A Week

Please dispose of the following items in the “Non-Burnable Trash” bag.

## ① Metal Objects (Metals)



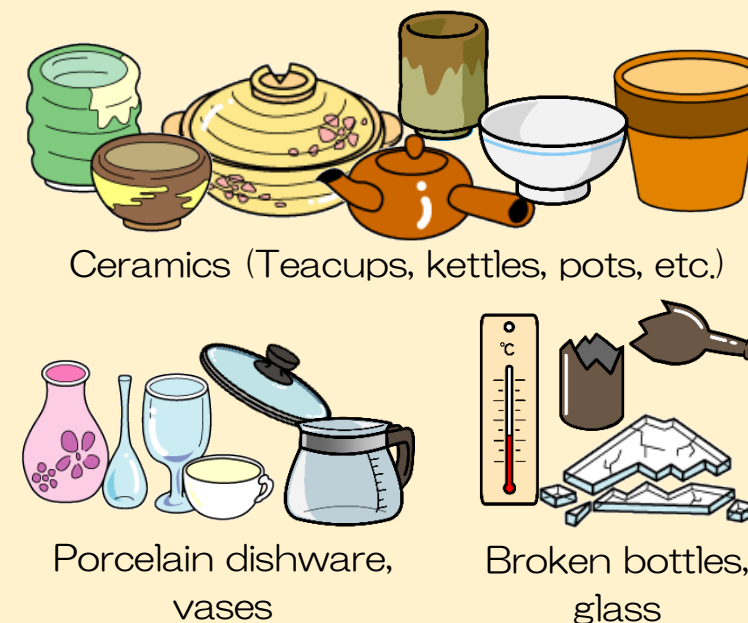
Spoons, forks, wire hangers,  
Umbrellas, water bottles, stovetop pots, etc.

## ② Small Household Items, Hazardous Items



Kettles, game consoles, clocks,  
thermometers (Digital, mercury), etc.

## ③ Ceramics, Glass (Breakables)



Flower pots, cosmetic bottles, thermometers,  
mirrors, heat-resistant glass, etc.

## ④ Other Incombustibles Mixed metal, wood, and plastics



Razors, magnets, artificial flowers/plants,  
oil-based clays, etc.

### Metal Object Disposal

- Dispose of small metal items (lids and nails) in a clear, small bag.
- Completely use spray can contents before discarding.  
※Cans with no holes will also be collected.
- Umbrellas that stick out of the bag will also be collected.
- Remove the vinyl from umbrellas.

### Small Appliance/Hazard Disposal

- Take out any batteries, and place batteries and lighters in small, separate clear bags.
- Fluorescent lights that stick out of the bag will also be collected.
- Remove the cords from appliances.

### Ceramic and Glass Disposal

- Wrap items like broken glass in paper and write “Broken glass” before disposing.
- Rinse out any contents and deposits, then discard.

### Other Incombustible Disposal

- Remove any batteries from toys before discarding.  
Discard batteries with small household items.
- Do not take out while attached to the bag.

## Notice Regarding Use of Outer Bag with Appropriate Bag

- An outer bag is only permitted when disposing of “Non-Burnable” trash.
- Divide non-burnable trash into the four categories using the appropriate bags.
- Tape the top portion of the bag to avoid the contents spilling out.
- Use the appropriate bag as you normally would for longer items that stick out.
- Do not use an outer bag for business-related garbage.
- You are not permitted to dispose of business-related garbage in an outer bag.

# Plastic Trash



Appropriate Bag (Max Weight 10 kg per bag),

PET Bottles: Collected Once A Month

Other Plastics: Collected Once A Week

Please dispose of the following items in the “Plastic Trash” bag.

## PET Bottles

### PET Bottle Disposal



① Remove caps.  
(Caps go with **Other Plastics**)



② Remove labels.  
(Labels go with **Other Plastics**)



③ Rinse clean.



④ Crush bottles.

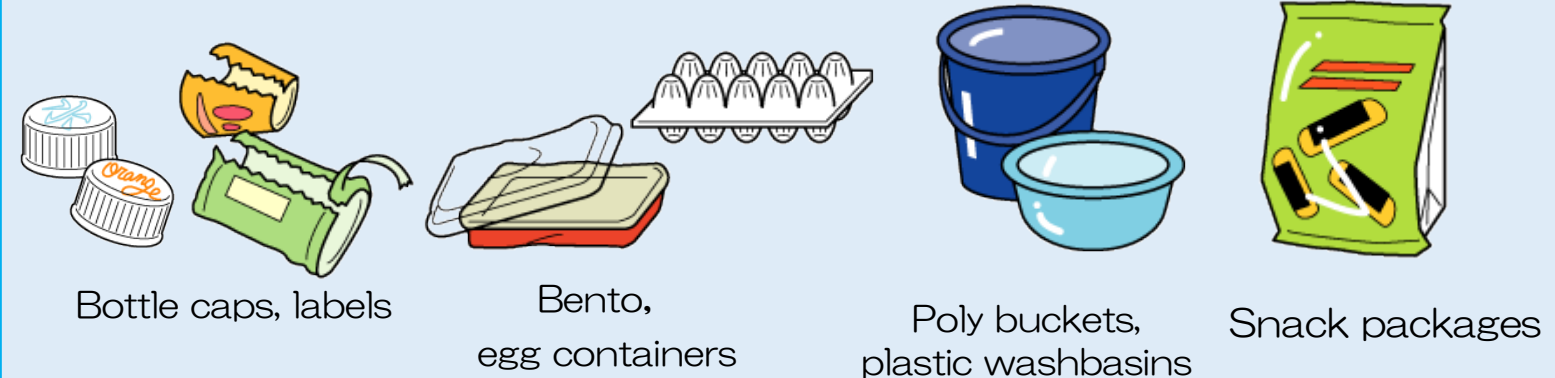
PET bottles for mineral water, tea, or juice, soy sauce, sweet sake, vinegar, and other seasoning PET bottles, etc.

Look for this mark!



The mark for PET bottles must have the number “1” in it. Look for it on labels or on the bottom of PET bottles.

## Other Plastics



Shopping bags, retort packs, tubes, egg and strawberry packs, shampoo containers, pudding and yogurt packs, plastic stationary, rubber hoses, rubber items, styrofoam, etc.

Look for this mark!



### Disposing of Other Plastics

- Completely use contents inside bottles and tubes. Remove the caps and lids. Rinse out any contents or deposits inside before discarding.
- Break down any large styrofoam parts into smaller pieces so they fit inside the appropriate bag.

**When possible, use the region's collection boxes and the supermarket's recycle bins for PET bottles and food trays.**

# Large/Heavy Trash

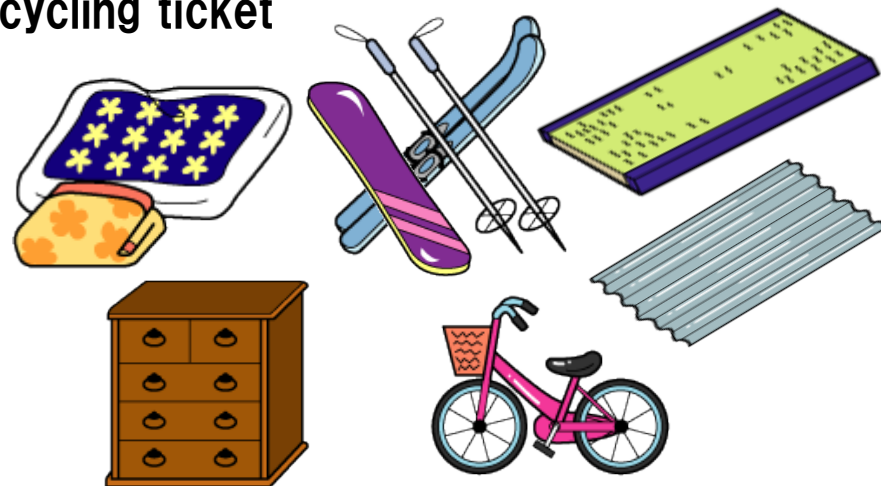
You must purchase a recycling ticket beforehand.  
Collected four times a year.

粗大

Large/Heavy trash includes items that are too large to fit inside an appropriate bag and weigh over 10 kg. For items over 70 kg, please bring to the Poccle Sanitation Center.

## ● One large/heavy item per recycling ticket

- One futon
- One pair of skis
- One rug, carpet
- Golf clubs (One set)
- One tatami mat
- Five galvanized iron plates
- Five Clothesline poles
- One dresser
- Up to 6 square tin cans
- Attach ticket where clearly visible, then dispose of trash at designated Large/Heavy Trash collection center.



- Remove all items from inside dresser drawers before disposal.

※Wipe any fuel from the stoves.

## Discharge Method for Spring Mattresses (Sofas, beds, etc.)

For spring mattresses, remove the spring, cloth, and padding portions separately. Proceed with the following method. Be careful not to harm yourself.

### 【Step 1】

Cut all around the exterior using a cutter or scissors. (See Red Lines.)  
Be careful not to harm yourself.



### 【Step 2】

Remove the exterior piece.



### 【Step 3】

Cut into the padding using a cutter or scissors to remove the springs inside the mattress.  
※Depending on the mattress, the spring form will differ.



### 【Step 4】

Separate and dispose of the cloth and padding in the following categories.

- Cotton...Burnables
- Cloth...Recyclables (Old clothing)
- Springs...Non-Burnables (Metals) or Large/Heavy Trash
- Padding...Other Plastics



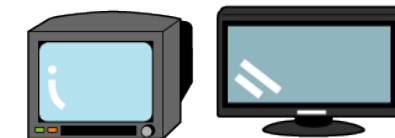
# Electrical Appliances

Collected four times a year.

You may recycle the following four household appliances.

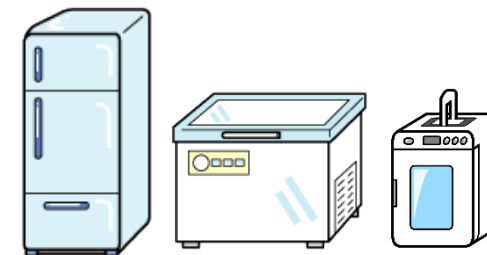


Air conditioners  
(including outdoor units)

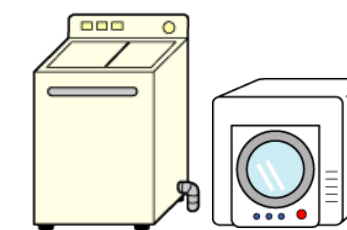


Televisions  
(CRT, liquid crystal, plasma)

※Any business-use items are non-applicable.



Refrigerators, freezers,  
(including hot/cold units)



Washers, dryers

Please dispose in the following three methods.

### 1. Request a pickup from an electronics store.

Request a pickup from the electronics store where item was purchased or exchanged for.

### 2. Bring items directly to a designated pickup facility.

Purchase a recycling ticket at the post office and bring directly to a designated pickup facility.

※The designated disposal facility is the location specified by the item's maker. For details, look at the Association of Electrical Appliances' Recycling Ticket Center or inquire at town hall.

(<https://www.e-map.ne.jp/p/rkcsymap/>)

### 3. Request a pickup or bring directly to Poccle Sanitation Center.

Request a pickup from Poccle Sanitation Center if it is unclear where you purchased your item, you are not near the store where purchased, or the store where purchased no longer exists.

Proceed with the following method.

#### ① Purchase a recycling ticket at the post office.

※Costs differ depending on the number of items/appliance maker. There is an additional pickup service charge for each item.



#### ② You can apply for pickup up to the day before the designated collection date.

(Door-to-door pickup)

☎ 0826-23-1120

- There is a transportation fee for each appliance regardless of pickup method.
- Remove everything from inside the machine.
- Confirm the pickup day on the garbage pickup calendar.

# Methods to Bring In Garbage

You can bring your household trash with you. (No reservation needed. Only for trash produced within the town.) Please drop off and unload at the Poccle Sanitation Center. You cannot bring in items that Poccle Sanitation Center does not process.

## Drop Off Location

Poccle Sanitation Center  
Akiota-cho, Owaza-Ana 1456 Banchi 1  
☎ 0826-23-1120



## Drop Off Hours

Monday-Friday (Holidays Excluded)  
9:00am~12:00pm, 1:00pm~4:30pm  
※Please check with the New Year.  
※We are unavailable outside of business hours.

## Costs

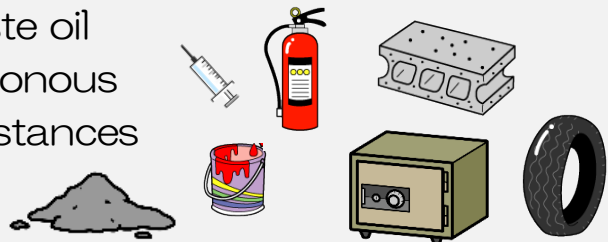
Costs vary for every 10kg.  
※Costs vary depending on the trash sorting category.  
※There are no fees for trash brought in designated bags.

## Important

Bring in your items separated.

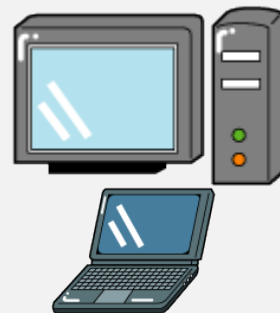
# Non-Collectible Trash

- Industrial waste
- Medical waste
- Tires
- Safes
- Concrete blocks
- Fire extinguishers
- Pesticides
- Waste oil
- Poisonous substances
- Cars
- Bicycles
- Filled paint cans
- Ink Cartridges
- Propane gas tanks
- Gypsum boards, etc.



## Computers

- Desktop
- Laptop notebooks
- CRT Display
- Liquid Crystal Display
- Monitors



Computers should be recycled.  
For details, contact the manufacturer or the Association of Computer Recycling.

The Association of Computer Recycling  
☎ 03-5282-7685  
Homepage <https://www.pc3r.jp/>

**For these items, contact the manufacturer or vendor where purchased.**

# Illegal dumping is a crime. Stop illegal dumping!



**In Akiota, we patrol often to detect and prevent unlawful dumping.**

“Illegal dumping” is the disposal of trash in forests, fields, and on the roadside. It is prohibited by law.

Abandoned waste not only emits a bad odor and attracts bugs, but it also can contain poisonous substances that seep into the region’s soil and water supplies. In recent years, illegal dumping has caused widespread damage to these resources.

**Those who violate this law are subject up to five years of imprisonment or a fine of 10 million yen (or 300 million yen if the offender is a corporation).**

It is typically the offender’s responsibility to handle illegal dumping, but in case it is unclear who the offender is, then it becomes the land owner’s responsibility.

Let’s create an environment where illegal dumping is prohibited by looking for it around owned property.

**It is our responsibility to pass this beautiful environment on to those in the future.**

**If you witness illegal dumping, report it.**



## Health Management Office

☎ 0826-23-1120

## Yamagata Police Station

☎ 0826-22-0110

## Residential Division

☎ 0826-28-2116

## Kake Branch

☎ 0826-22-1111

## Tsutsuga Branch

☎ 0826-32-2121

**Stop burning your trash at home**



**Burning your trash at home is prohibited by law.**

Controlled burnings is the burning of household or business waste and is prohibited by law. (Excludes at-home incineration for farming.)



- When disposing of trash while moving, contact an authorized organization.
- When you are moving and must dispose of large trash, or are unable to move the trash yourself, request a pickup from an organization authorized by Akiota's Waste Transportation Industry.
- Requesting an unauthorized organization to process your trash is illegal.**
- For trash disposal, please contact a town-authorized organization.

## Industrial Waste

You cannot bring industrial waste to a pickup center for electrical appliances. Please dispose of industrial waste with the following methods.

### ● Request pickup transportation from an authorized town organization.

- Place your industrial waste in the appropriate bag and contact an organization.
- Dispose of trash in bags for each sorting category.
- Confirm the pickup transportation fees with the organization.

### ● Bring in trash by yourself for disposal.

- Bring in separated trash.
- When bringing your trash in the appropriate bag, there are no handling fees.
- When not using an appropriate bag, there are handling fees for each category.

- **Trash sorting is basically the same as that for electrical appliances. You cannot bring in items corresponding with industrial waste.**
- **We also do not accept large/heavy trash and electrical appliances from offices.**

- **For industrial waste, please dispose of shredder waste with “Recyclable Trash”.**

## Akiota's Authorized Vendors for Waste Pickup

Organization Name	Phone Number
Environmental West, Ltd.	0120-114-227, 0826-28-1888
Western Public, Ltd.	0826-22-2122

※Prices and services vary based on the approved vendor. For details, contact each group.

## Do not use an unauthorized organization when disposing of electrical appliances or large/heavy trash!

It is unlawful for a pickup organization to collect your household and large/heavy trash without receiving the town's authorization or approval.

**We cannot collect trash with only the waste disposal operator or second-hand vendor's approval.**

There may also be high handling fees. Thank you for taking appropriate measures.

### What are SDGs?

Sustainable Development Goals(SDGs) are international goals that aim to create a better, more sustainable world by 2030, originally published in the“2030 Agenda for Sustainable Development”. As a successor to the Millennium Development Goals (MDGs) established in 2001, member countries at the September 2015 UN Summit decided upon 17 goals and organized a pledge from 169 targets to, “Leave no one behind.” Not only are developing countries working on attaining SDGs but also developing countries as universal goals that even Japan is proactively addressing.

### SDG Objectives Related To Waste

#### 2 Zero Hunger

- By 2030, we want to eliminate hunger and make enough nutritious food accessible for everyone, especially for the young and impoverished.



#### 11 Sustainable Cities and Communities

- By 2030, we will greatly reduce our adverse effects on the environment per person and pay careful attention to the atmosphere's quality and the management of other waste.



#### 12 Responsible Consumption and Production

- By 2030, following agreed upon international framework through recycling products, we will attain management for all waste disposal with appropriate chemical substances for the environment. In order to minimize adverse effects on people's health and the environment, we will greatly reduce chemical and waste emissions affecting the air, water, and land.



※The illustrations used are from the Ministry of Economy, Trade and Industry's “Waste Image Collection” on the 3R Initiative website.