

Non-burnable Garbage

How to separate
into four
categories

Put this poster up
and refer to it when
necessary

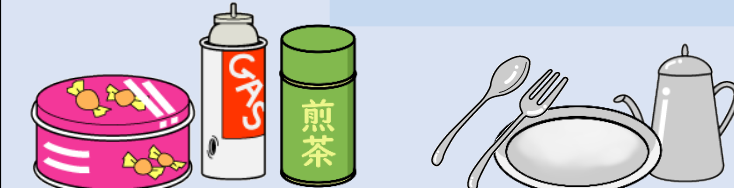
Please divide garbage into the following four categories and be sure to use the designated garbage bags.

① Metal Objects

Mainly: (Metals)



pots, kettle, frying pans Knives, scissors, retractable blades (please wrap in paper)



Metal snack boxes, cans, tea canisters Spoon, fork, metal plates



Wire hanger Thermos, flask Aluminum foil



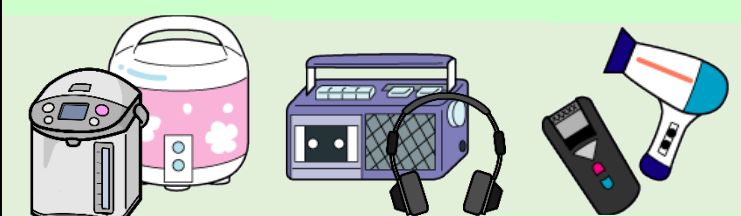
Metal lids/caps Bottle opener, can opener Wire, needle, nail umbrellas (Remove plastic covering)

② Small household appliances

Mainly: (Devices, hazardous waste)



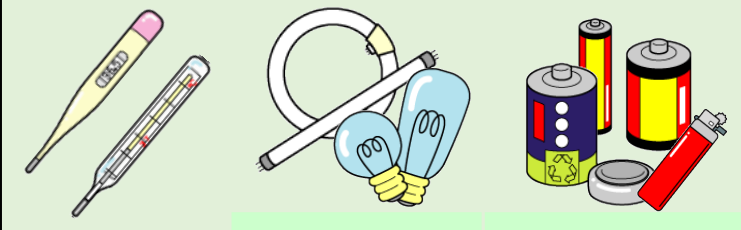
Cell-phone, telephone Smartphone, tablet Electric cord



Electric pot, rice cooker Radio and cassette player, headphones Remote-control, hair dryer



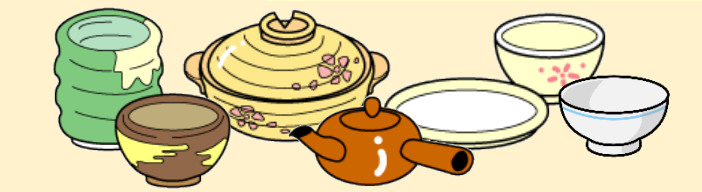
Game console Gas burner Camera, clock



Thermometer (digital, mercury) Fluorescent lamp, mercury lamp, electric bulb Batteries, button cells, lighters

③ Earthenware, glass

Mainly: (Breakables)



Ceramics (bowl, teacup, earthenware pots, etc)



Glass tableware, vase Flower pot



Heat-resistant glass, broken bottles, broken glass, flat glass



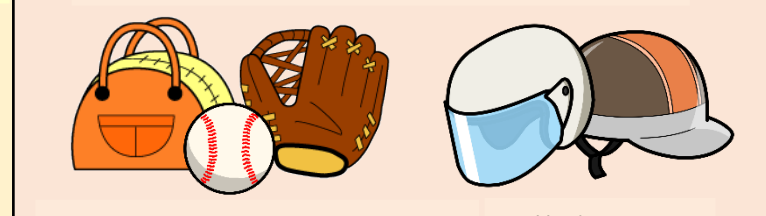
Thermometer glass cosmetic bottles Mirror

④ Others

Mainly: Incombustibles



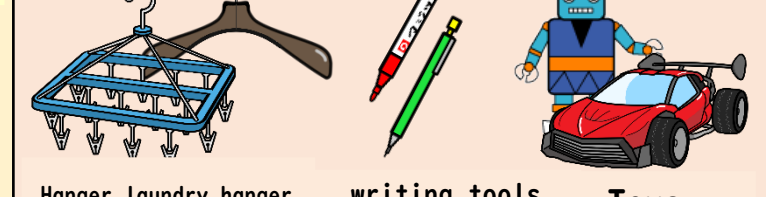
Footwear (including ski boots)



Bag, leather products Helmets



Ice pack, thermal gel Pocket warmer Razors



Hanger, laundry hanger writing tools Toys (metal, wood, plastic mixture)

[Please] Be sure to put metal lids and nails, batteries and lighters etc. in a clear bag and place them in a designated garbage bag.

◆Contact◆

POCCLE Kurodao Clean Center

☎ 0826-23-1120

The illustrations used in this poster are taken from the 'Waste Clipart collection' from the Ministry of Economy, Trade and Industry's '3R Policy' website.